

Lot Number	Description
1	2006 Comac Model Simpla 45E electric floor scrubber/dryer serial no. 000584
2	Elstar model EM230 drinks chiller with sliding glass doors 900x520x910mm
3	Elstar model EM230 drinks chiller with sliding glass doors 900x520x910mm
4	Elstar model EM230 drinks chiller with sliding glass doors 900x520x910mm
5	Staycold Model 1360 920-litre drinks chiller with sliding glass doors 1350x0630x2020mm
6	Staycold Model 1360 920-litre drinks chiller with sliding glass doors 1350x0630x2020mm
7	AMC Icematic Model N7 Ice making machine
8	Lamber Model 1-B5 stainless steel glass washer
9	Elstar model EM230 drinks chiller with sliding glass doors 900x520x910mm
10	Elstar model EM230 drinks chiller with sliding glass doors 900x520x910mm
11	Elstar model EM230 drinks chiller with sliding glass doors 900x520x910mm
12	Staycold Model 1360 920-litre drinks chiller with sliding glass doors 1350x0630x2020mm
13	Staycold Model 1360 920-litre drinks chiller with sliding glass doors 1350x0630x2020mm
14	Staycold Model 1360 920-litre drinks chiller with sliding glass doors 1350x0630x2020mm
15	2 Counter-top glass door drinks chillers
16	4 Electronic cash registers Samsung ER-290,ER4615 and Sharp XE-A102,ER1970
17	8 Various spindle-back dining chairs and 6 bar tables 600mm
18	16 Spindle-back dining chairs
19	6 Various chairs and 13 high bar stools
20	Ricoh Aficio AP3800c photo copier
22	Steel safe 600x0600x800mm - 1 key
23	Elstar model EM230 drinks chiller with sliding glass doors 900x520x910mm
24	Elstar model EM230 drinks chiller with sliding glass doors 900x520x910mm
25	Counter-top glass door drinks chiller 490x490x800mm
27	<p>Front of House Mixing Equipment comprising :</p> <ul style="list-style-type: none"> Midas XL200 44 - channel mixer deck Roland SOE330 Dimmensional space delay Yamaha rev7 digital reverberator YamahaSPX990 multi effect processor Yamaha rev500 digital reverberator 3 Drawmer dual gate DS201 controllers 2 Drawmer DL221 dual compressor/limiters 2 Behringer MDX2100 compressors Denon DN-2100F twin cassette deck Denon T620 cassette deck, Denon 2100F 2-way CD controller Klark Teknik DN360 graphic equaliser BSS FDS-388 loudspeaker management system 2 Midas XL2900 power supply units
28	8 EV Front of house speakers type MTH4B 2.2kw loudspeakers 920x760x 920mm, 4 unloaded speaker cabinets and single speaker 1200x0480x540mm

29	Zero 88 Sirius 500 96 - channel front of house lighting desk and 2 midi tower PCs with monitors
30	Stage Monitor Mixing Equipment comprising : Soundcraft Vienna 40 - channel mixing desk 2 TDM 24 CX-4 quad 2 - way electronic crossovers 2 C Audio RA200 amplifiers 3 Chevi Research Q6 amplifiers Q900 amplifier 2 A3000 linear amplifiers 4 A6000 linear amplifiers Pro Sound 1000 amplifier BSS FDS360 frequency dividing system Klark Teknik DN360 graphic equaliser 2 Xta Electronics GQ600 dual channel graphic equalisers 2 Soundcraft CPS950 console power supplies ASL BS210 intercom
31	Behringer 8024 linear 24 - bit converter DBX 166A compressor/limiter Roland SRV2000 midi digital reverberator 2 Behringer MDX4400 dynamics processors
32	Zero 88 Demux 48 4- -rack output controller DMX512 light processor 5 Light & Sound Design 12-channel fused switches Distribution box 44 spotlamp cans on 7 tracks
33	4 Abstract rotating scanner dance floor lights
34	4 Martin Roboscan rotating dance floor lights
35	4 Skytec DMX DJ Scan250 rotating scanner dance floor lights 2 Martin Roboscan scanner lights 31 spotlamp cans Martin Rainbow-2 spotlight
36	5 Mirror ball reflectors (2 motorised)
37	Smoke generator with remote wired switch
38	2 Smoke generators Rotating blue beacon 2 rope lights
39	Numark CD Mix2 twin CD mixing console
40	Numark CD Mix2 twin CD mixing console
41	Genius Motor Spot rotating & swivelling spot light
42	Genius Motor Spot rotating & swivelling spot light
43	8 stage monitor loudspeakers (6 x 460x590x450mm) & (2x 765x440x1040mm)
44	6 Stage monitor loudspeakers 690x490x570mm
45	27 microphone and instrument stands
46	13 microphones and 4 3-way instrument to output units
47	Parkers electric heated stainless steel food warming cabinet Stainless steel electric deep fat fryer
48	Lincat stainless steel 2-pot Bain Marie Electric griddle Luxell LX3550 electric oven/hotplate

49	TDA Domestic fridge 3 microwave ovens
50	Whirlpool chest freezer 1600x640x860mm
51	Allen & Heath GL2000 front of house 24-channel mixing deck Yamaha Q2031 & Q2031B graphic equalisers Denon DV-610F CD/Cassette deck Behringer DSP8000 digital 24-bit dual DSP mainframe DBX 166 compressor/limiter Ashly XR2001 4-channel 2-way stereo 3-way crossover
52	8 front of house loudspeakers (4x 910x620x600mm)(2x820x520x700mm)(2xBeyma compression drivers)
53	Stage Monitor Mixing Equipment comprising : Chevin Research Q6 amplifier 2 C Audio RA2000 amplifier RA3000 amplifier 24-channel monitor output/PA mic input distribution board
54	6 Stage monitor loudspeakers 870x430x450mm,530x500x1260mm, (2x500x400x270mm) and (2x720x470x530mm)
55	Eurolight LC2412 professional 24-channel DMX lighting console
56	Stanton S550 AM-7S Citronic twin CD DJ mixer console
57	4 Skyronic Ultima Moon Shower lights Skytech rotating scanner light 22 spotlight cans Pulsar BICC-DIN signal distribution panel
58	10 microphone stands and a keyboard stand
59	JB'S - Carling sign outside 5x1m need scaffold to remove
60	JB'S sign 2mx600mm
61	GPO telephone box no door

Lot 1



Lot 2



Lot 3



Lot 4



Lot 5



Lot 6



Lot 7



Lot 8



Lot 9



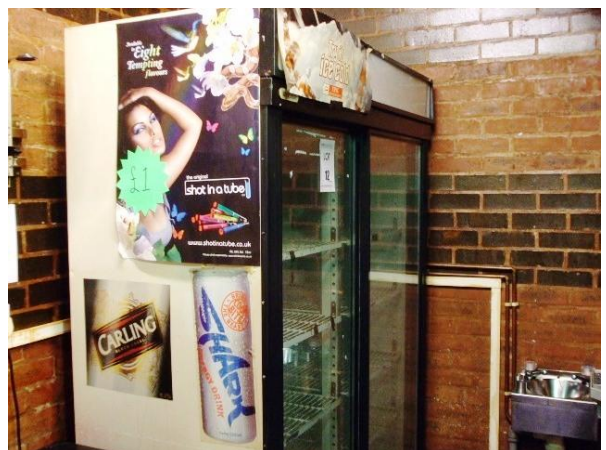
Lot 10



Lot 11



Lot 12



Lot 13



Lot 14



Lot 15



Lot 16



Lot 17



Lot 18



Lot 19



Lot 20



Lot 21



Lot 22



Lot 23



Lot 24



Lot 25



Lot 26



Lot 27



Lot 28



Lot 29



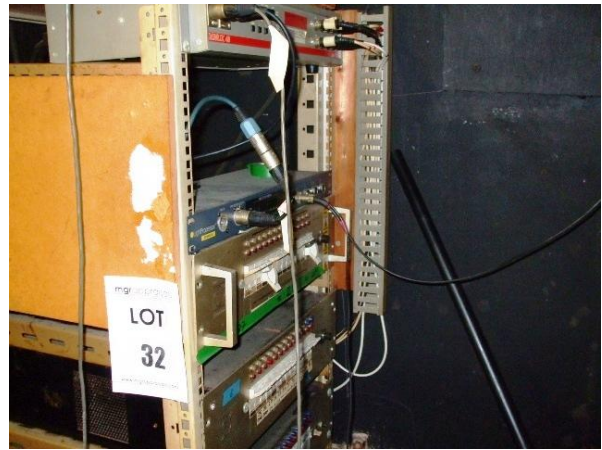
Lot 30



Lot 31



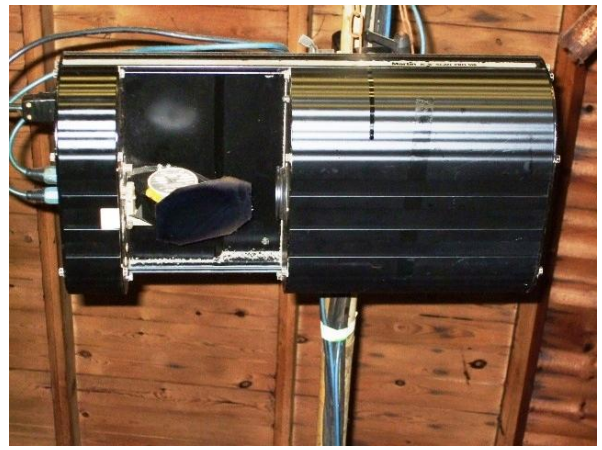
Lot 32



Lot 33



Lot 34



Lot 35



Lot 36



Lot 37



Lot 38



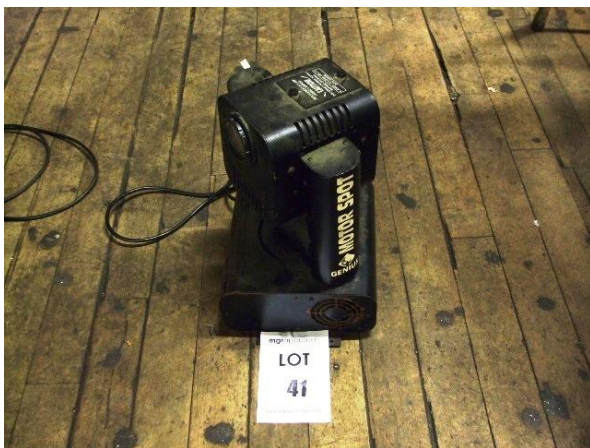
Lot 39



Lot 40



Lot 41



Lot 42



Lot 43



Lot 44



Lot 45



Lot 46



Lot 47



Lot 48



Lot 49



Lot 50



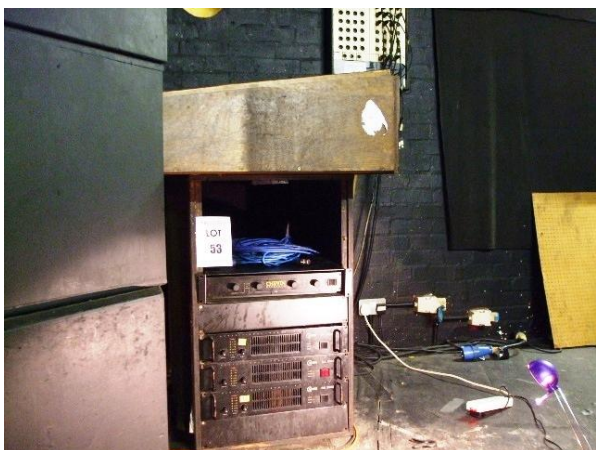
Lot 51



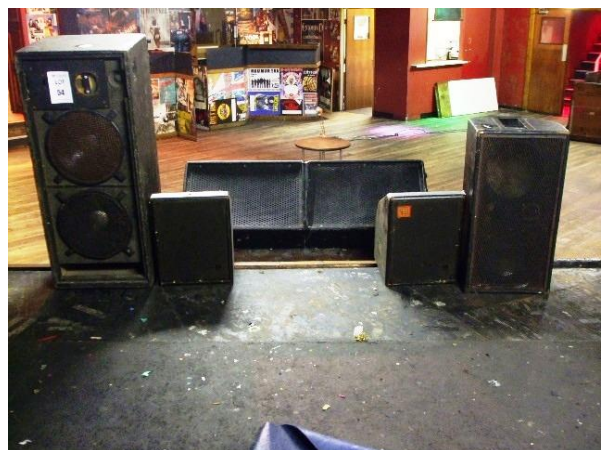
Lot 52



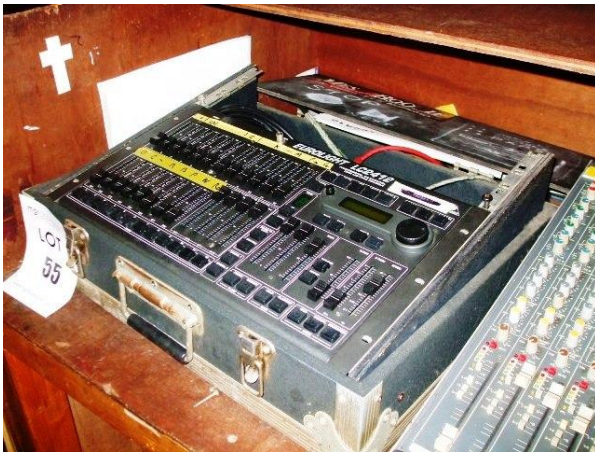
Lot 53



Lot 54



Lot 55



Lot 56



Lot 57



Lot 58



Lot 59



Lot 60



Lot 61

